

# BRIDGE POINT TACOMA 2MM

bridgepointtacoma2mm.com | 4204 S Burlington Way | Tacoma, WA 98409



**ACCESS. SIZE. FLEXIBILITY.**

INTRODUCING ONE OF PUGET SOUND'S NEXT  
MAJOR INDUSTRIAL DEVELOPMENTS, JUST MINUTES  
FROM INTERSTATE 5 & THE PORT OF TACOMA  
**AVAILABLE Q1 2026-Q2 2026**



**TAKE  
VIRTUAL  
TOUR**



**VIEW PROPERTY**



**VIEW PHOTOS**

**TODD CLARKE**

todd.clarke@kidder.com  
253.722.1422

**MATT MURRAY**

matt.murray@kidder.com  
206.248.6541

**TY CLARKE**

ty.clarke@kidder.com  
253.722.1419

**MATT MCLENNAN, SIOR, CCIM**

matt.mclennan@kidder.com  
253.722.1458





# SPECULATIVE DESIGN | 4-BUILDING OPTION



## BUILDING A

3810 S Burlington Way

- 517,042 building SF
- 125DH / 4GL
- ±228 trailer spaces
- ±224 car spaces
- 40' clear height
- Available Q1 2026

## BUILDING B

4204 S Burlington Way

- 957,726 building SF
- 184DH / 4GL
- ±396 trailer spaces
- ±424 car spaces
- 40' clear height
- Available Q1 2026

## BUILDING C

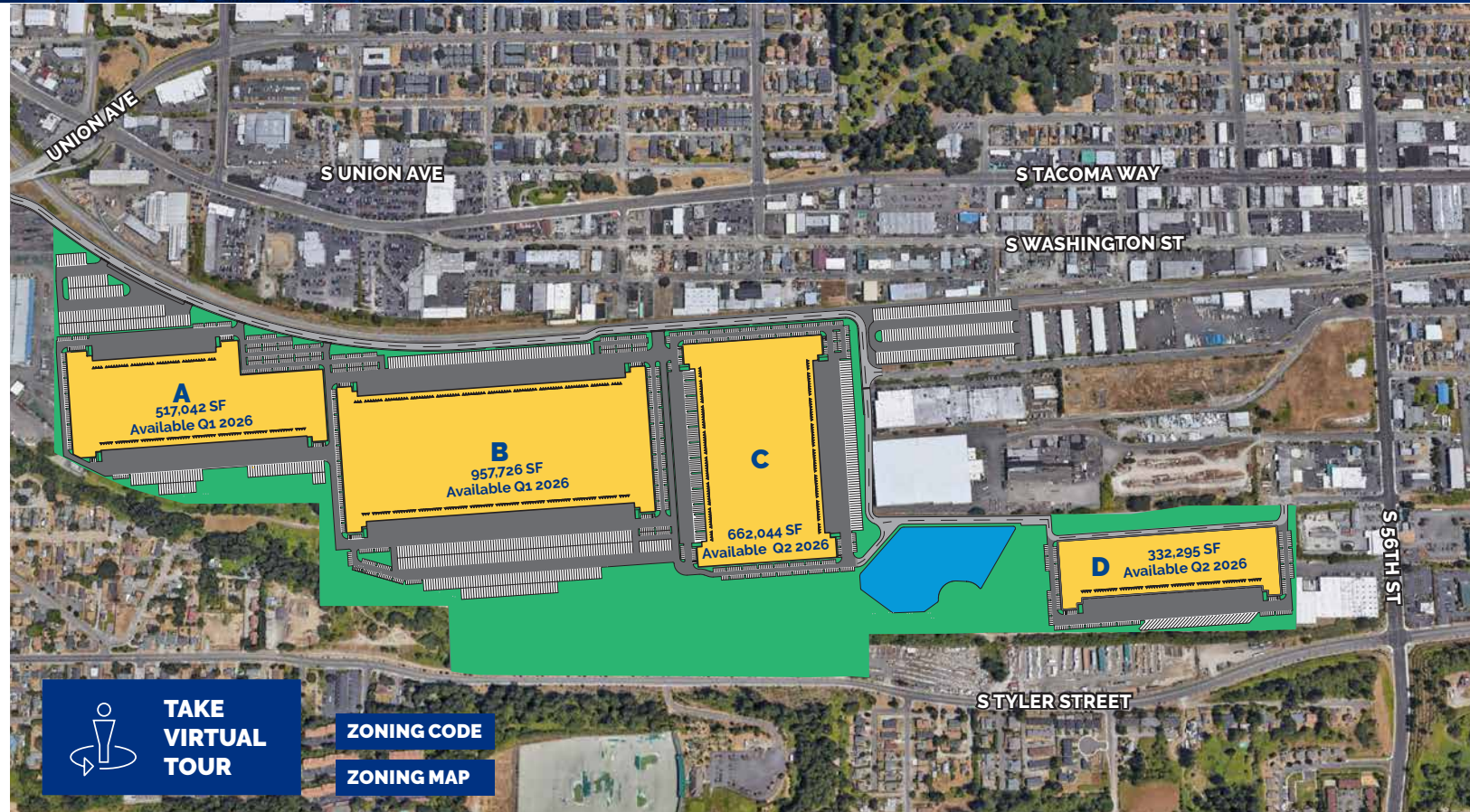
4708 S Burlington Way

- 662,044 building SF
- 118DH / 4GL
- ±223 trailer spaces
- ±414 car spaces
- 40' clear height
- Available Q2 2026

## BUILDING D

5024 S Madison St

- 332,295 building SF
- 60DH / 2GL
- ±32 trailer spaces
- ±192 car spaces
- 40' clear height
- Available Q2 2026



TAKE  
VIRTUAL  
TOUR

ZONING CODE

ZONING MAP



±160 AC  
SITE AREA



±2.5M SF  
BUILDING AREA



1,349  
PARKING SPACES



486DH/14GL  
DOOR POSITIONS



891  
TRAILER PARKING



# FREEWAY ACCESS



TO INTERSTATE 5

**1 mile**  
**4 minutes**

TO PORT OF TACOMA

**5 miles**  
**10 minutes**

TO WA-16

**1 mile**  
**3 minutes**

## HIGHLIGHTS

Conveniently located just 5 miles from the Port of Tacoma, Bridge Point Tacoma 2MM offers excellent exposure with direct access to Interstate 5



[bridgepointtacoma2mm.com](http://bridgepointtacoma2mm.com) | 4204 S Burlington Way | Tacoma, WA

This information supplied herein is from sources we deem reliable. It is provided without any representation, warranty, or guarantee, expressed or implied as to its accuracy. Prospective Buyer or Tenant should conduct an independent investigation and verification of all matters deemed to be material, including, but not limited to, statements of income and expenses. Consult your attorney, accountant, or other professional advisor.





# PROPERTY PHOTOS



[bridgepointtacoma2mm.com](http://bridgepointtacoma2mm.com) | 4204 S Burlington Way | Tacoma, WA

This information supplied herein is from sources we deem reliable. It is provided without any representation, warranty, or guarantee, expressed or implied as to its accuracy. Prospective Buyer or Tenant should conduct an independent investigation and verification of all matters deemed to be material, including, but not limited to, statements of income and expenses. Consult your attorney, accountant, or other professional advisor.





## 51 MILLION+ SF WORLDWIDE

BRIDGE is a vertically integrated real estate operating company and investment manager focused on the **ACQUISITION** and **DEVELOPMENT** of **CLASS A INDUSTRIAL PROPERTIES** in supply-constrained **CORE** markets in the U.S. and the U.K.

Our people **EMBRACE COMPLEXITY** and execute with **CREATIVITY AND CERTAINTY**. The results of our expertise and efforts are exceptional investor returns on irreplaceable industrial assets.



AWARDS	
New Good Neighbor, NJ Business & Industry Association	2021
Industrial Project of the Year, SFBJ	2020, 2018
Industrial Speculative Development of the Year, NAIOP Chicago	2020, 2019, 2018, 2017
Deal of the Year, NAIOP New Jersey	2020, 2018
Most Significant Industrial Transaction of the Year, IREJ	2019
Developer of the Year, NAIOP South Florida	2019, 2018, 2016
Developer of the Year, NAIOP Chicago	2019, 2015
Community Appearance Award, City of Fort Lauderdale	2019, 2018
Developer of the Year, Chicago Commercial Real Estate Awards	2018, 2015, 2011
Project of the Year, NAIOP South Florida	2017
Industrial Redevelopment of the Year, NAIOP Chicago	2015, 2014

### HEADQUARTERS

9525 W. Bryn Mawr Ave., Rosemont, IL 60018 | 312 683 7230

[www.bridgeindustrial.com](http://www.bridgeindustrial.com)